

PC Board Plotter Offers Improved Precision and Control

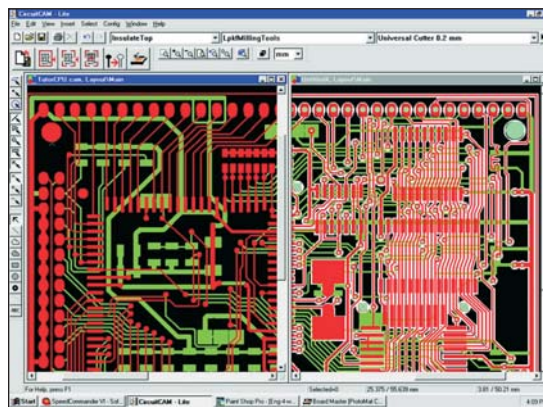
Mechanical PC board milling machines provide rapid prototyping and production in-house development and optimization of board layouts

The latest addition to the line of mechanical circuit board plotters offered by LPKF Laser & Electronics is the Protomat® S100, which offers significant improvements in precision and

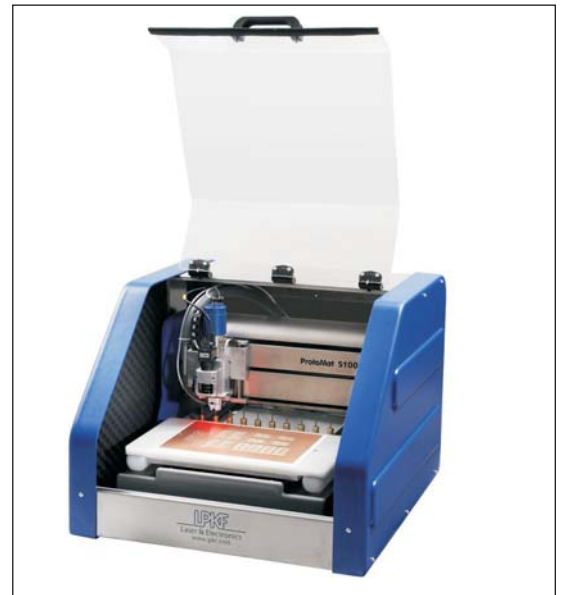
control over earlier models.

The S100 combines a maximum milling speed of 6 inches (150 mm) per second with system resolution of 0.01 mils (0.25 μm). Using a variable speed 3-phase spindle motor that operates up to 100,000 RPM, the plotter produces extremely fine traces for all types of PC boards, with specific emphasis on RF and microwave boards. The ability to produce prototypes in minutes allows rapid turnaround time for design modifications.

The Protomat S100 includes integrated head lighting and a 10 position automatic milling tool changer for unattended operation. The milling tools provide high geometrical accuracy and steep, sharp cutting edges for



The new Protomat S100 operates with LPKF's computer-aided manufacturing software.



track side walls. The tools provide minimum and uniform material removal on all standard RF and microwave PTFE based substrates. The motorized Z-axis is driven independently, moving the plotter milling head over multiple axes, providing three-dimensional plotting capability for machining front panels, housings and pockets in substrates. An air bearing depth control allows for precise control of the cutting depth without any surface contact.

The S100 does not require chemicals and is enclosed by a soundproof acoustic cabinet for safe operation in a standard office or engineering laboratory environment. The unit can operate in conjunction with LPKF multilayer lamination and through-hole plating equipment.

LPKF Laser & Electronics

Tel: 503-454-4212

www.lpkfusa.com

HFeLink 302